



Figure 12. Ratio of eligible deaths/waitlisted candidates with allocation MELD/PELD > 15, by 11 regions.

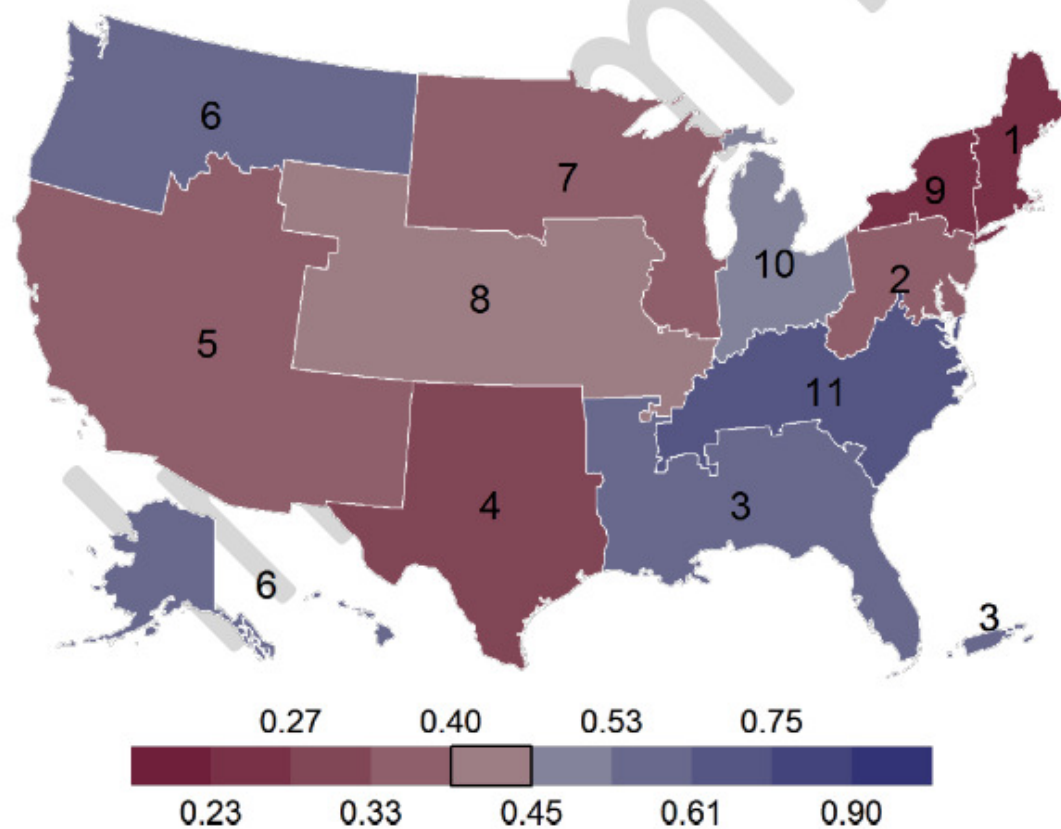
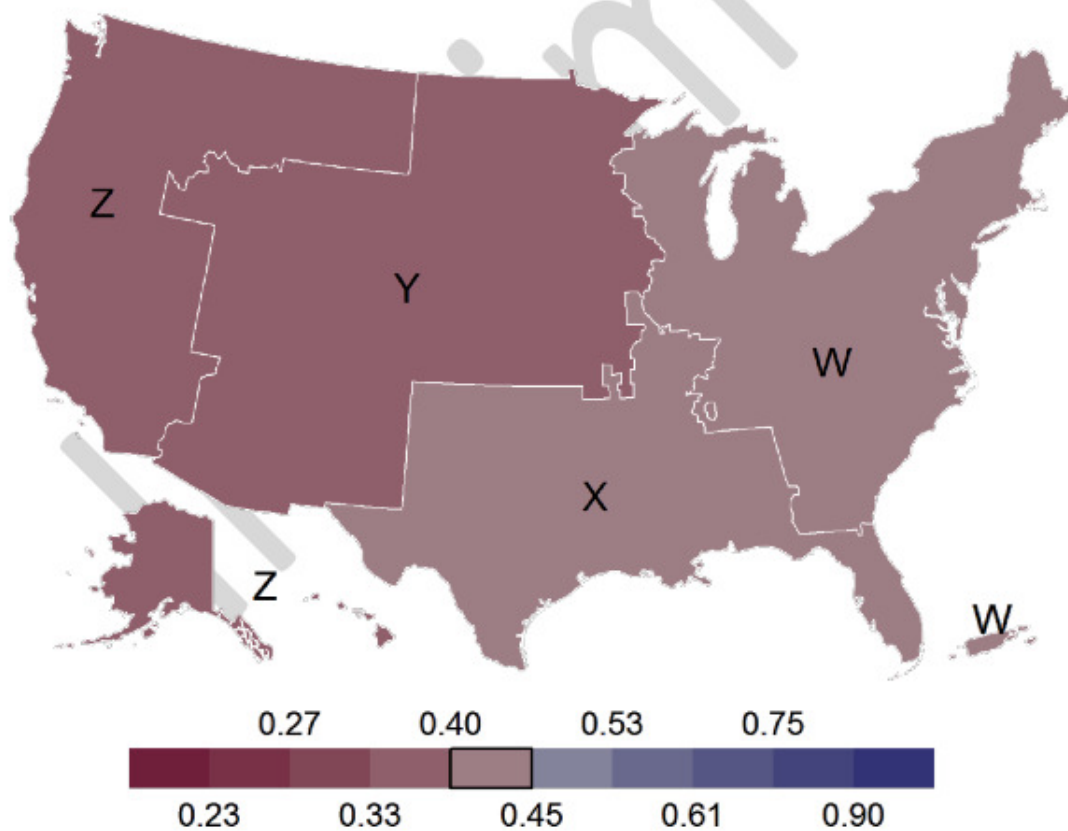


Figure 14. Ratio of eligible deaths/waitlisted candidates with allocation MELD/PELD > 15, by 4 districts.





Working with Eurotransplant to Optimise Organ Allocation

Ina Jochmans, MD, PhD
University of Leuven, Belgium



CUTTING EDGE OF
TRANSPLANTATION

AST | AMERICAN SOCIETY OF
TRANSPLANTATION

RESOLVING THE ORGAN SHORTAGE



PRACTICE |



POLICY |



POLITICS

FEBRUARY 25-27, 2016 • PHOENIX, ARIZONA

no relevant financial disclosures



Phoenix



Brussels & Antwerp in Belgium

<http://earthobservatory.nasa.gov/IOTD>

1958 anti-Mac

J. Dousset



1967

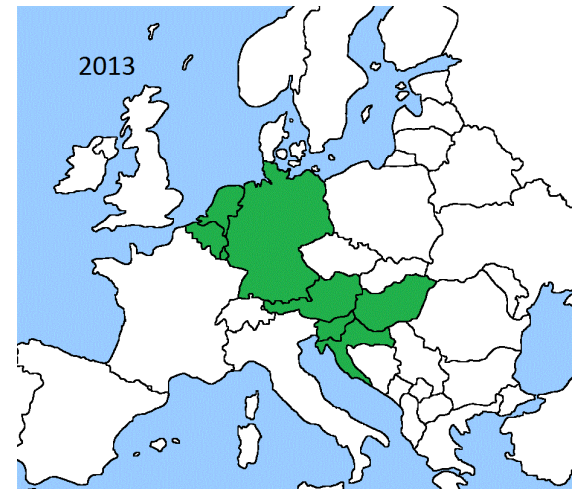
HLA-match Kidney

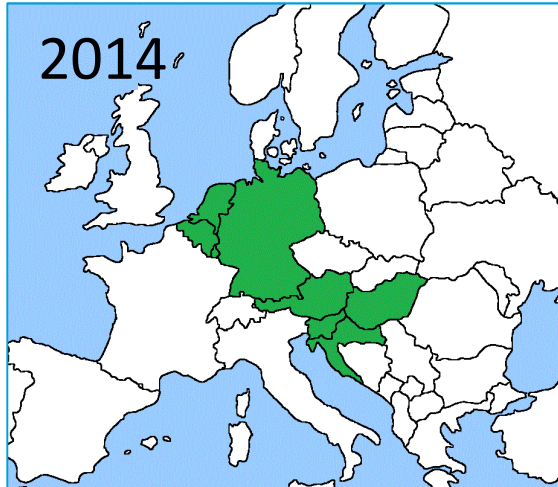
J. van Rood



Eurotransplant

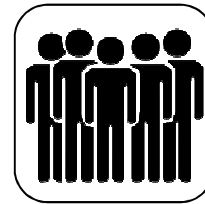
1965 HLA identification





2014

Austria
Belgium
Croatia
Germany
Hungary
Luxembourg
Netherlands
Slovenia



134 mi

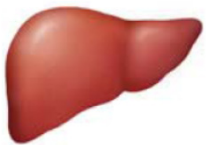


1601

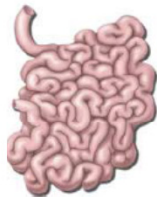


~ 15,000

Transplant Centres:



40



5



23



71



38



39

> 7,000 organs/y



24%

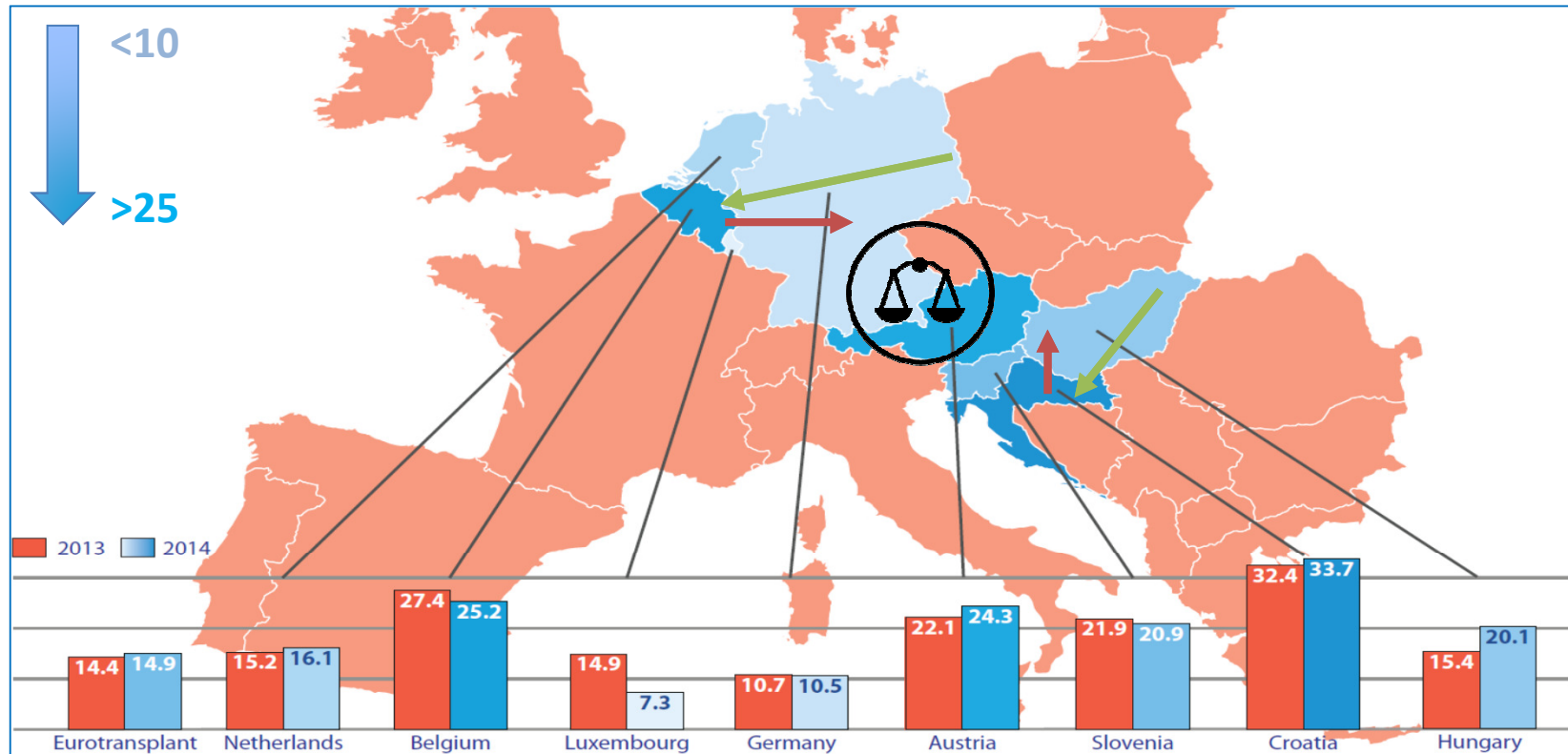
Eurotransplant factsheet 01/2015

EU directive

National Competent Authorities

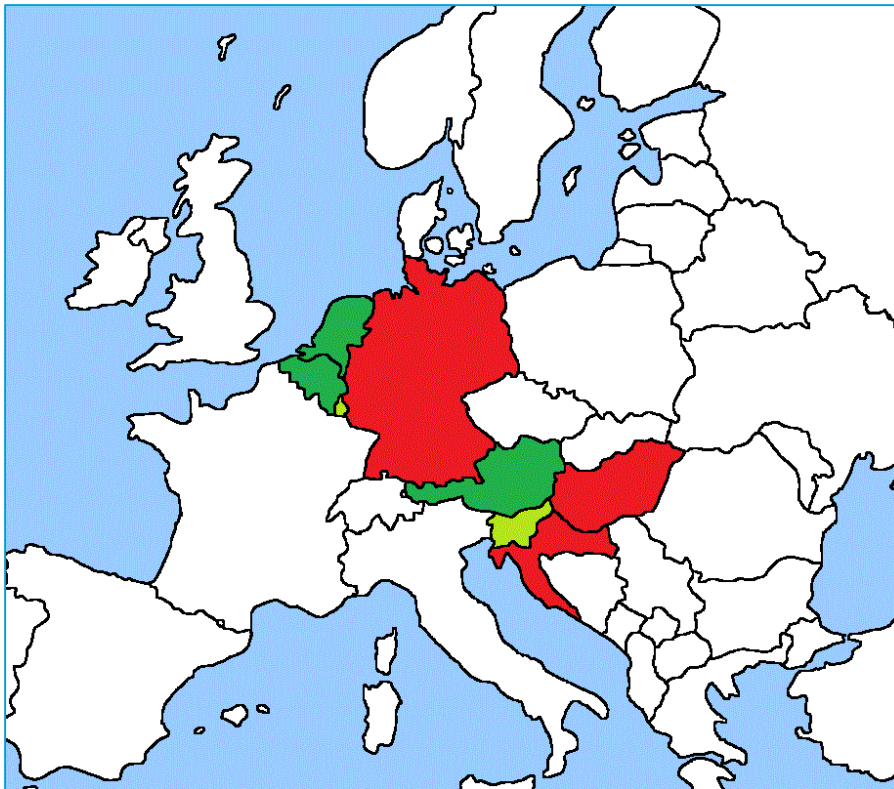


Number deceased donors pmp



Eurotransplant annual report 2014

DCD in only 3 countries



■ active programmes

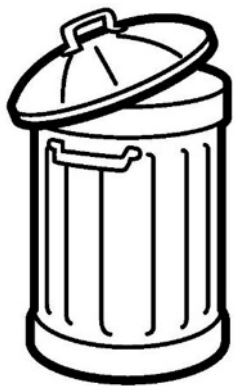
Austria, Belgium, Netherlands

■ allowed, not active

Luxembourg, Slovenia

■ not allowed

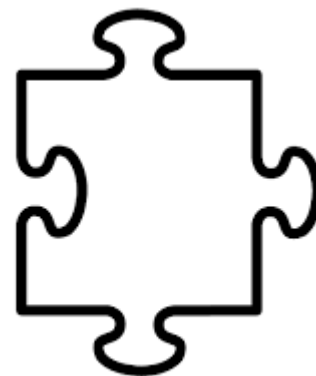
Croatia, Germany, Hungary



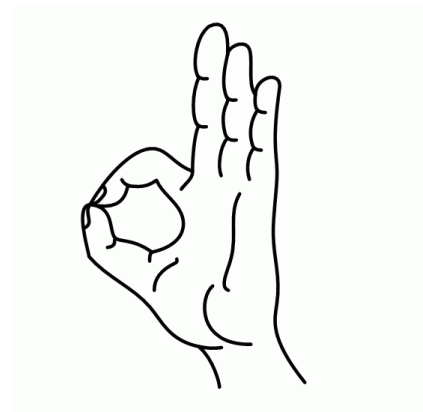
utilization



urgency

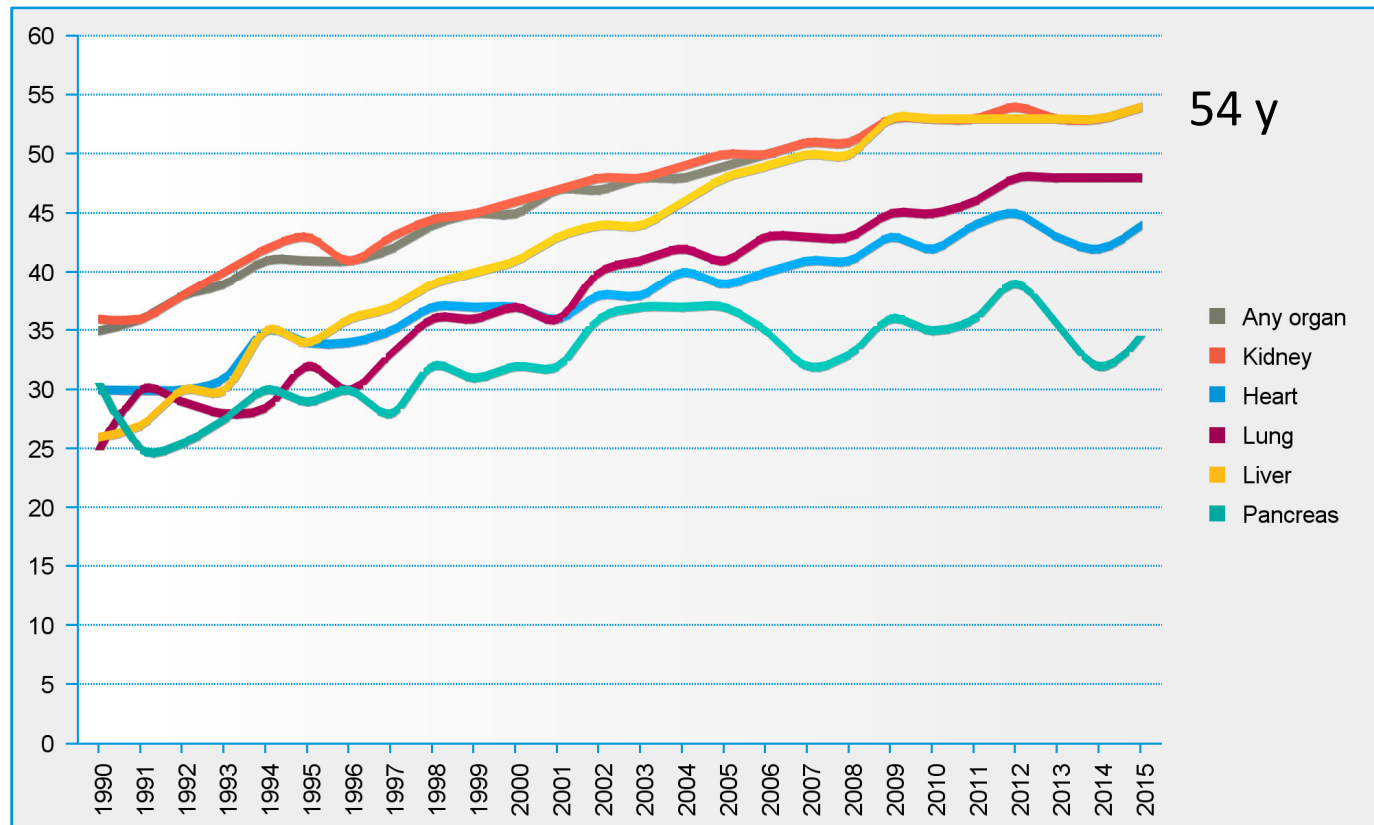


match

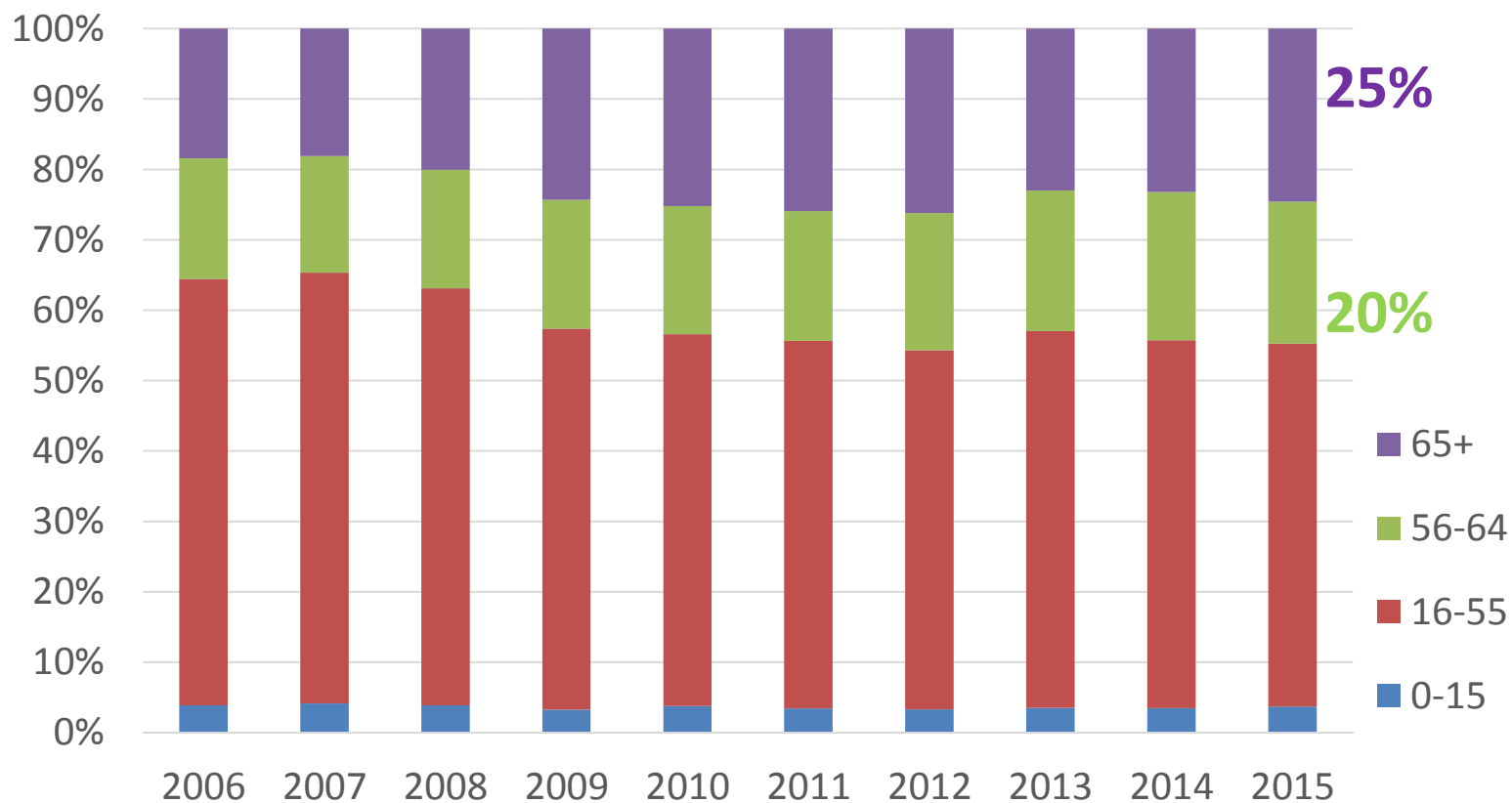


outcome

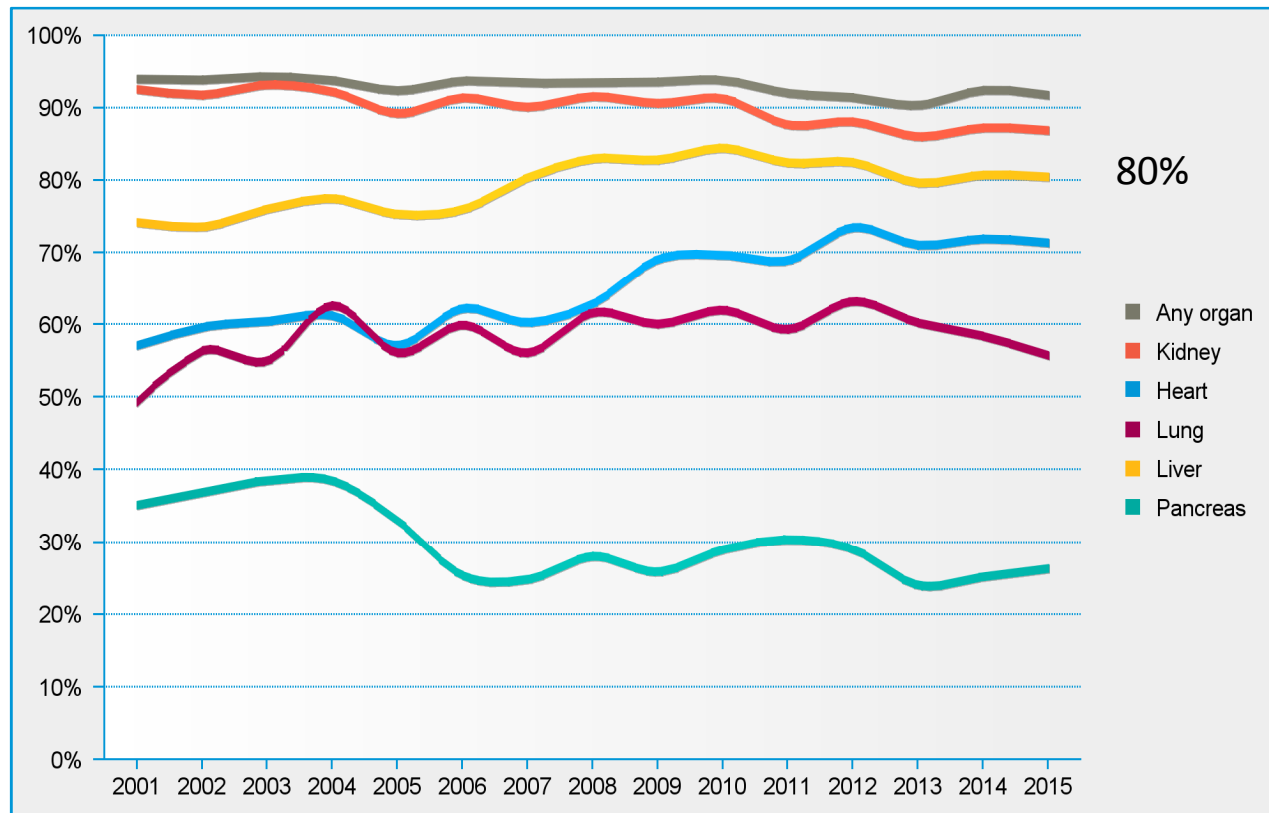
Median deceased donor age



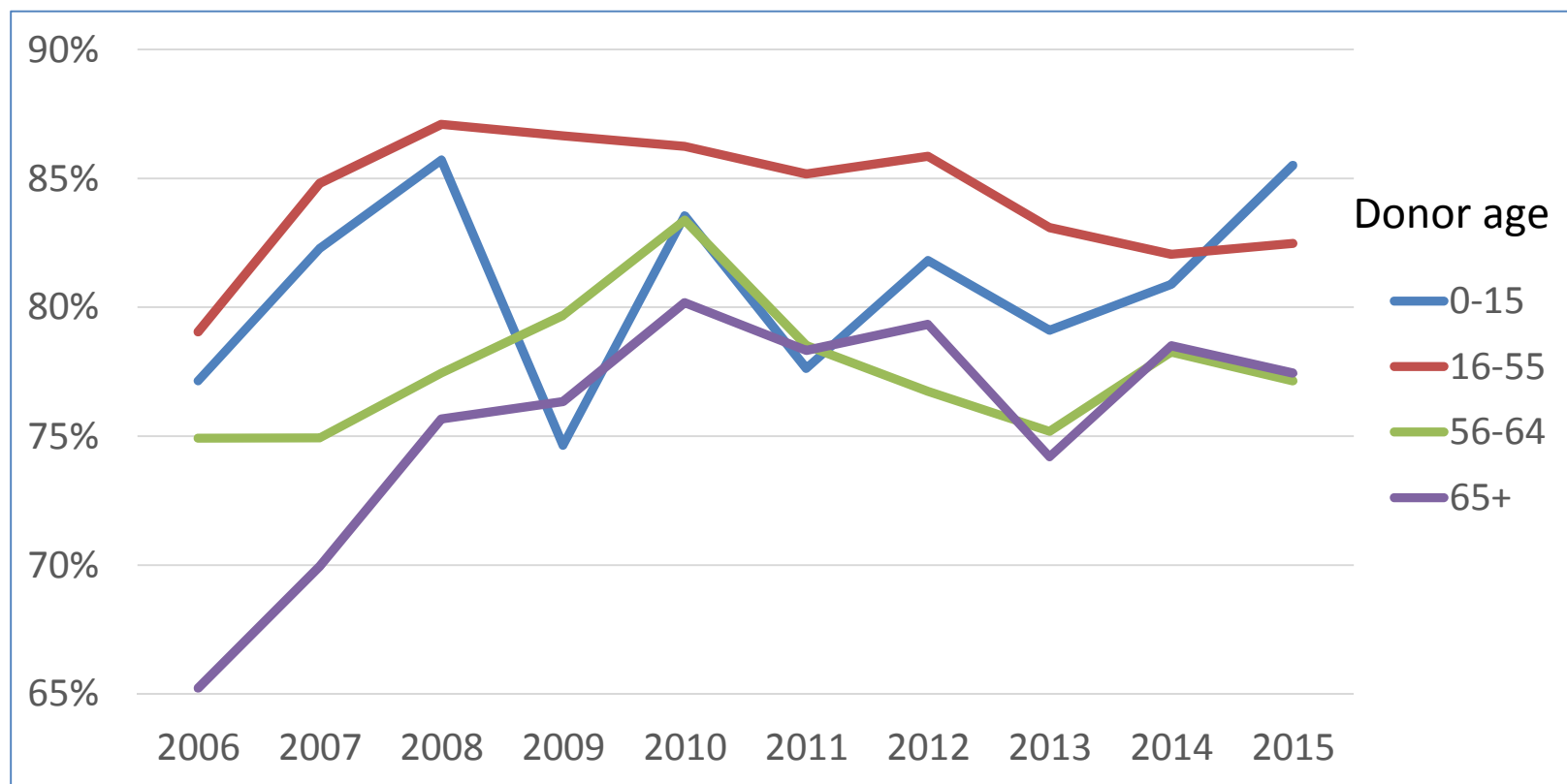
Donor age transplanted livers



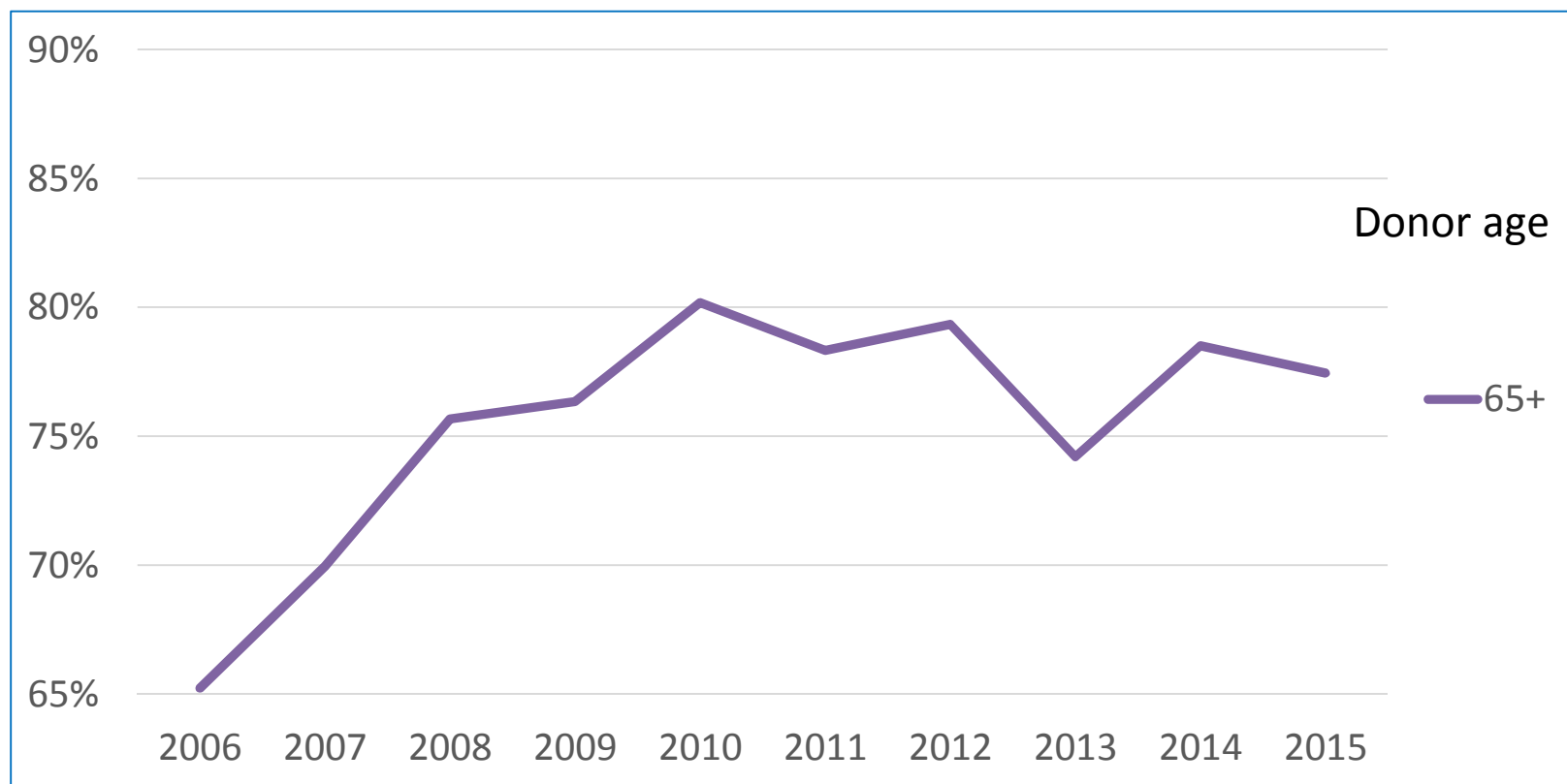
Organ utilization of reported deceased donors



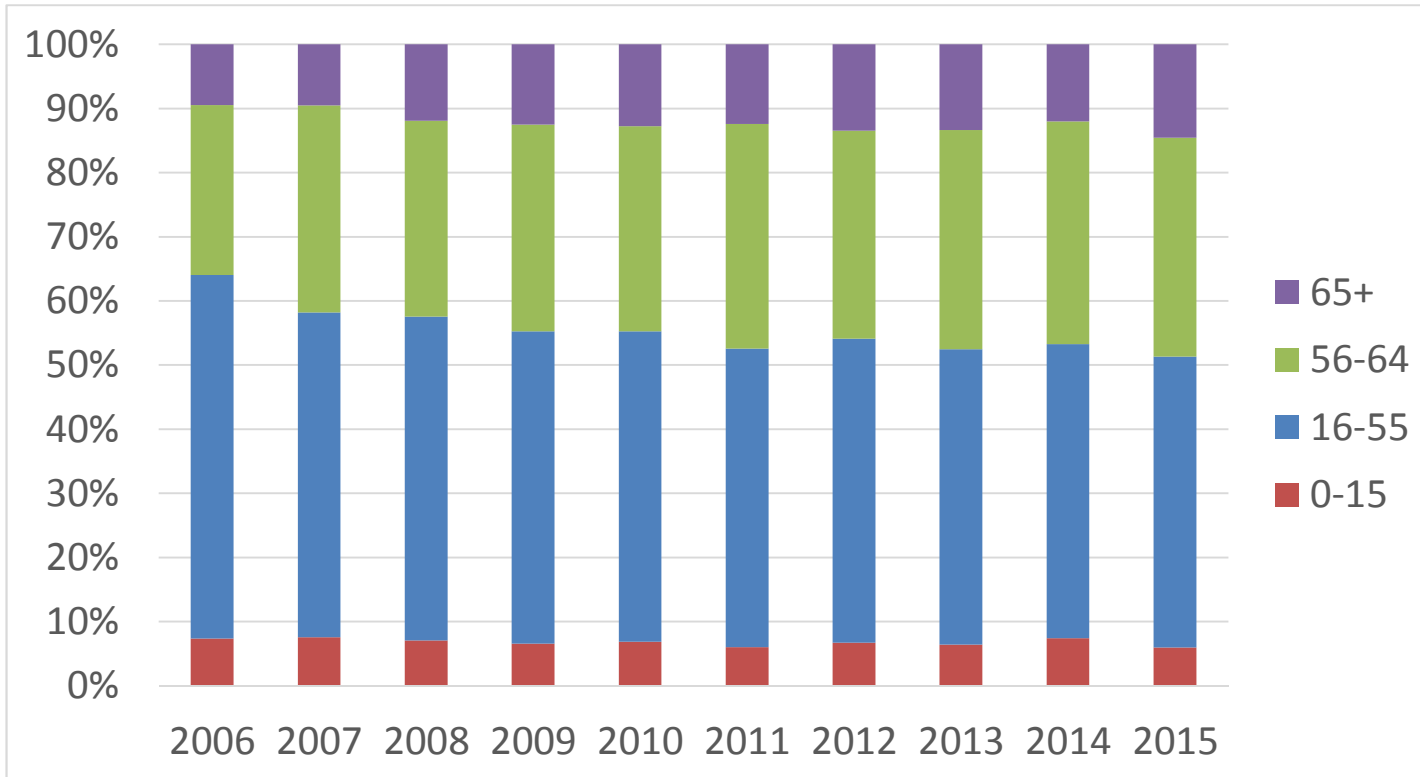
Liver utilization



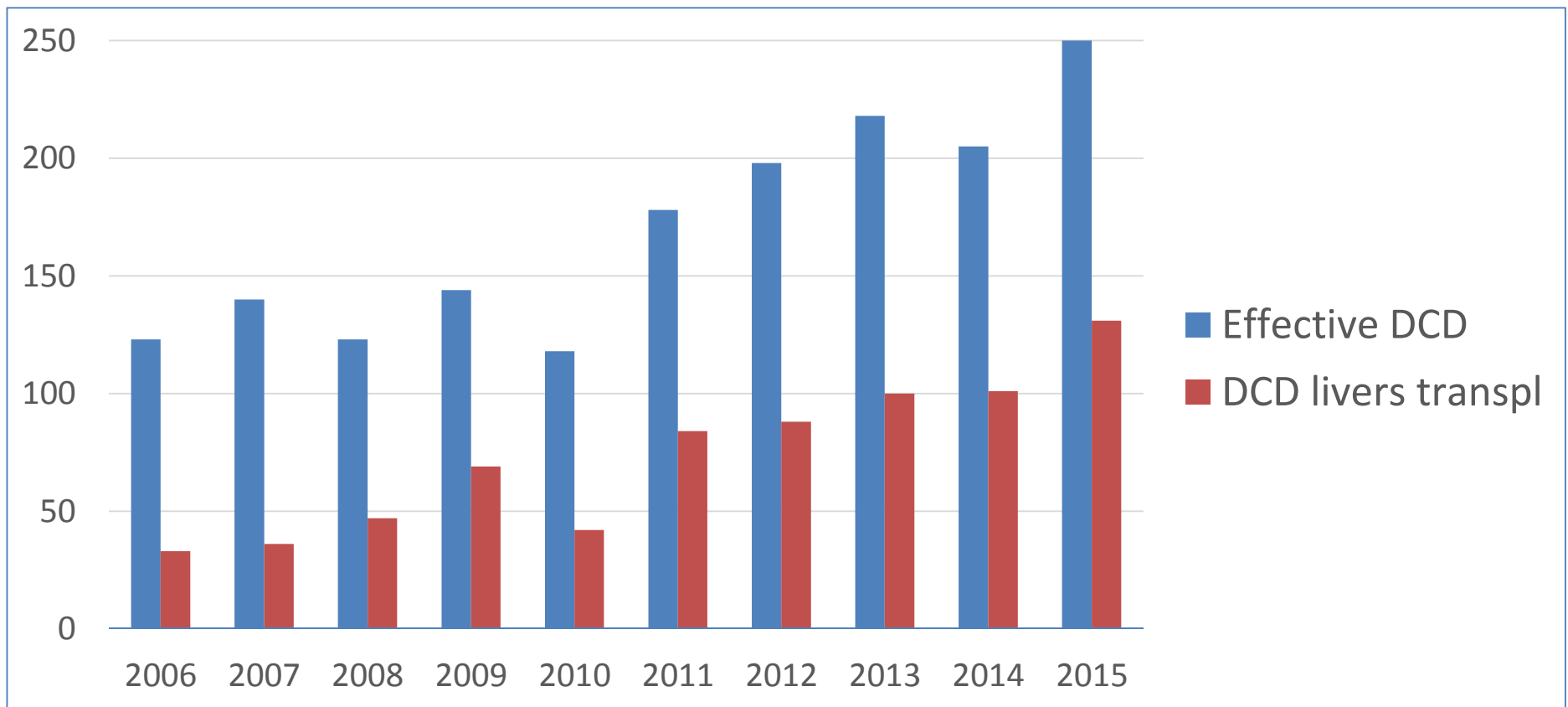
Liver utilization

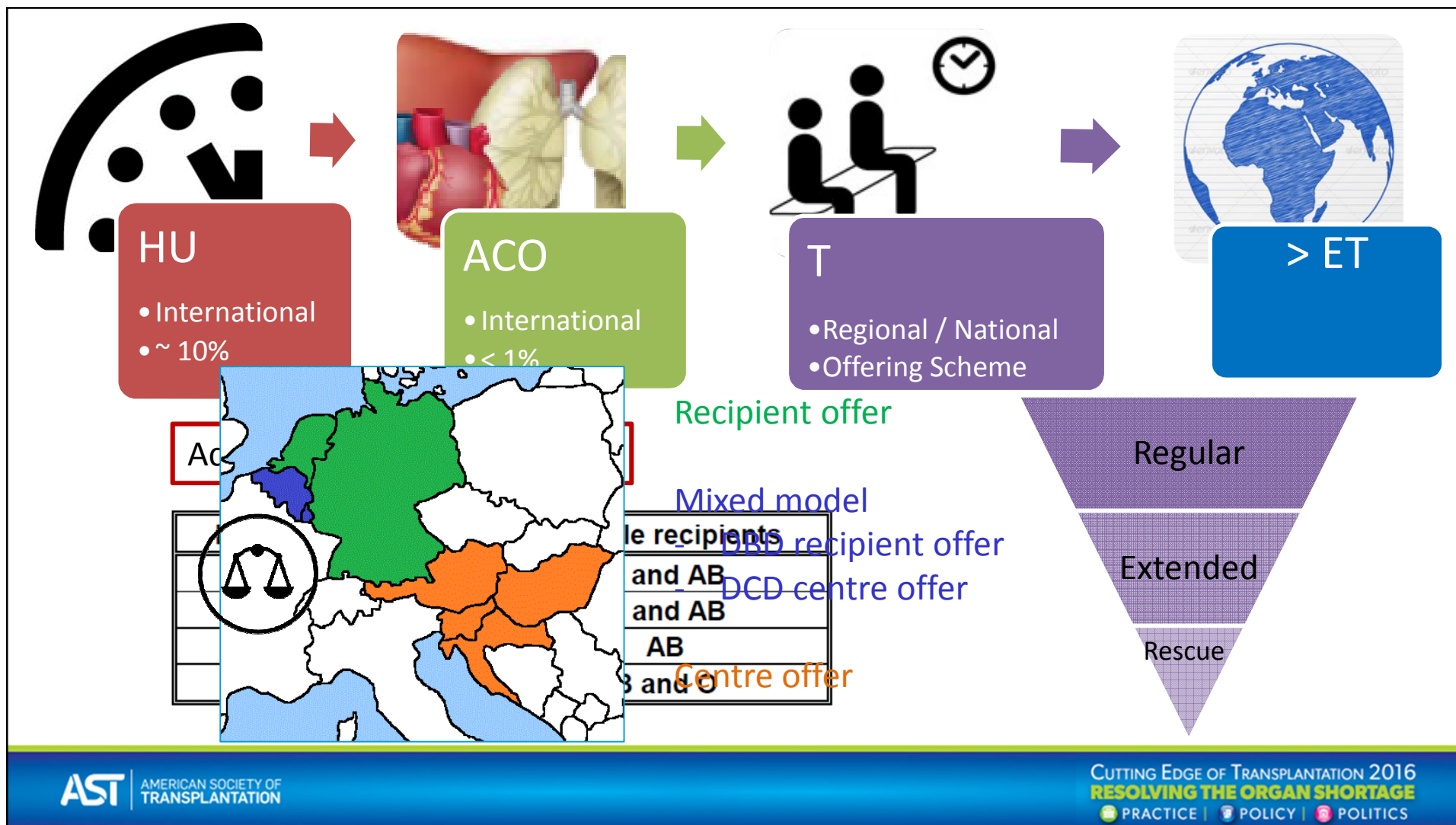


Liver recipient age

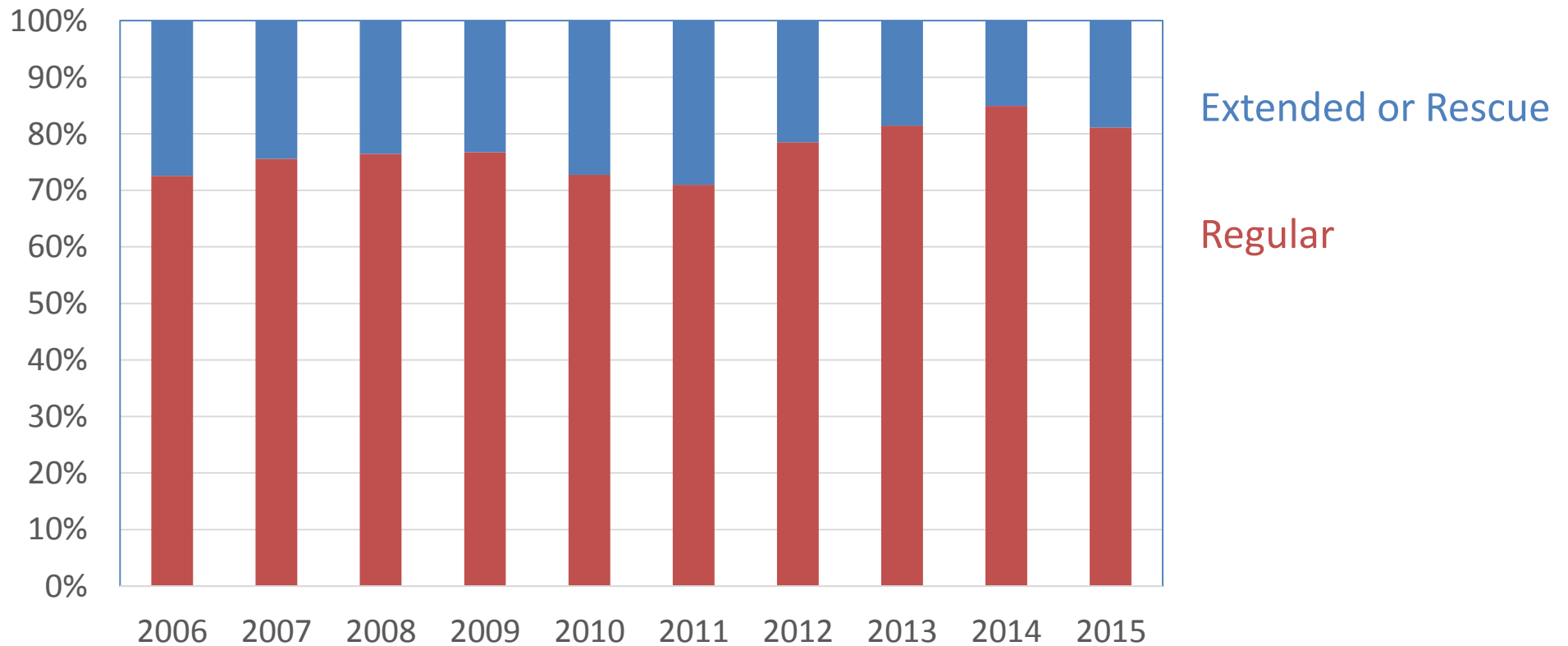


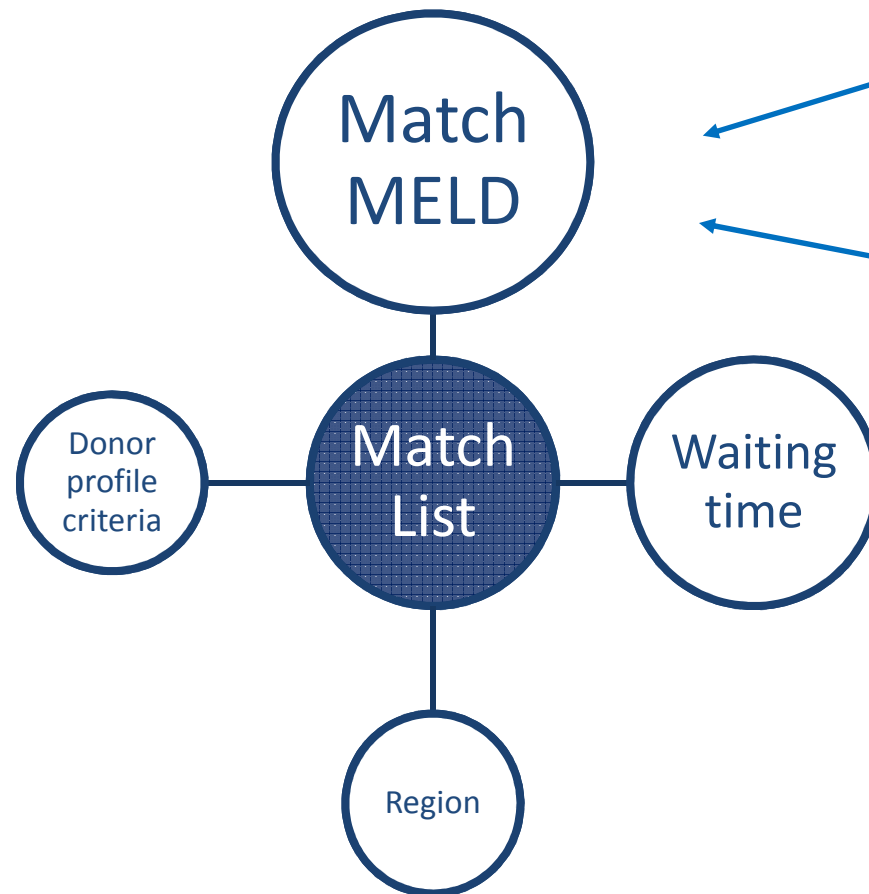
DCD Liver utilization





Offering scheme of transplanted livers





Calc MELD

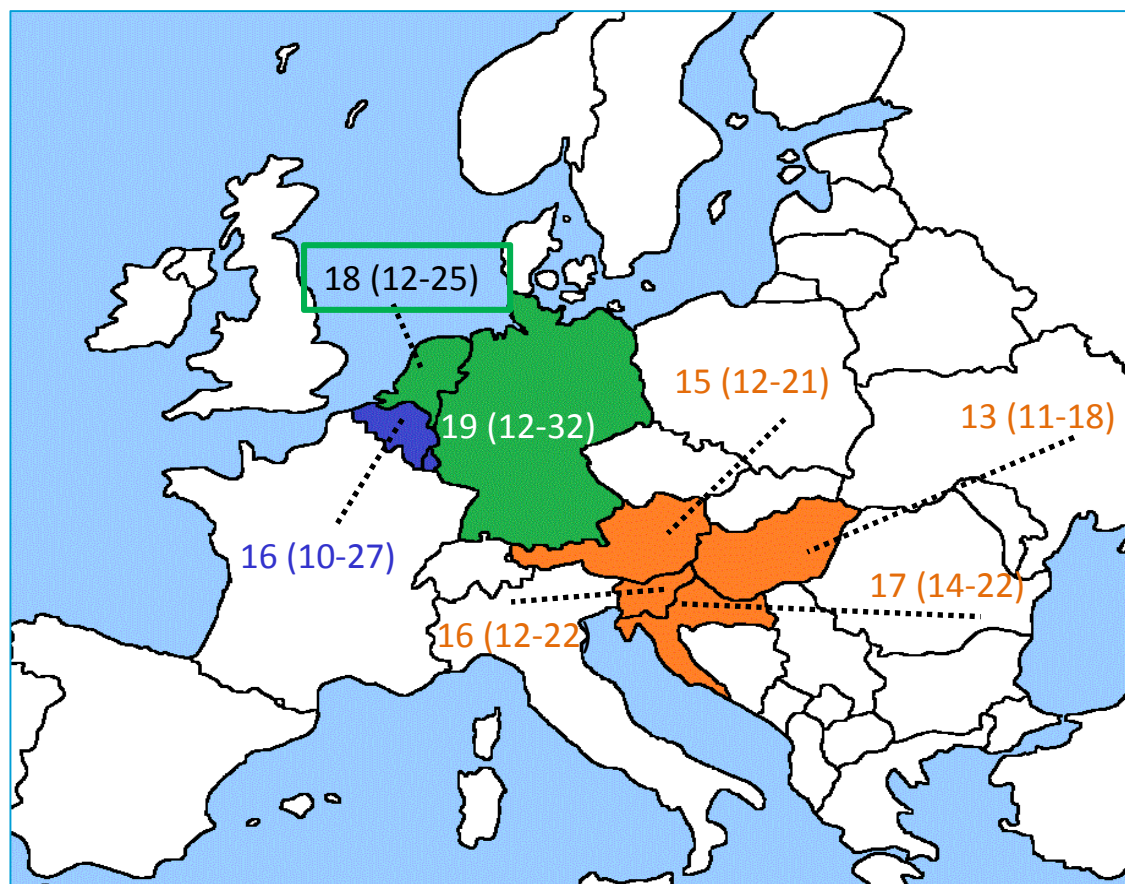
$$= 9,57 \ln Cr + 3,78 \ln Bili + 11,2 \ln INR + 6,43$$

Exc MELD

→ increase points / 3 mo

- “Standard”
country specific
- “Non-Standard”
 - audit group
 - BE, GER, NL

Eurotransplant manual 2015



Median (IQR) Calc MELD

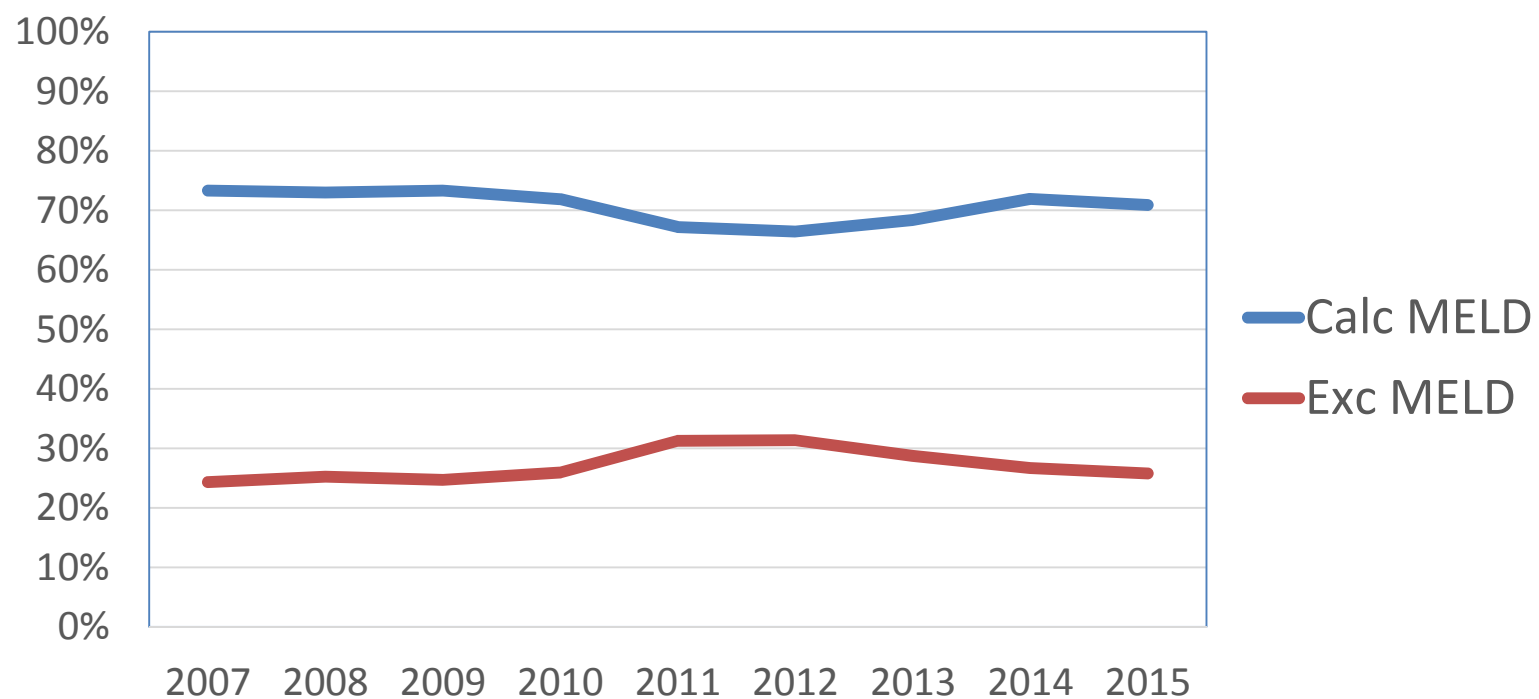
Recipient driven offering
according to match list

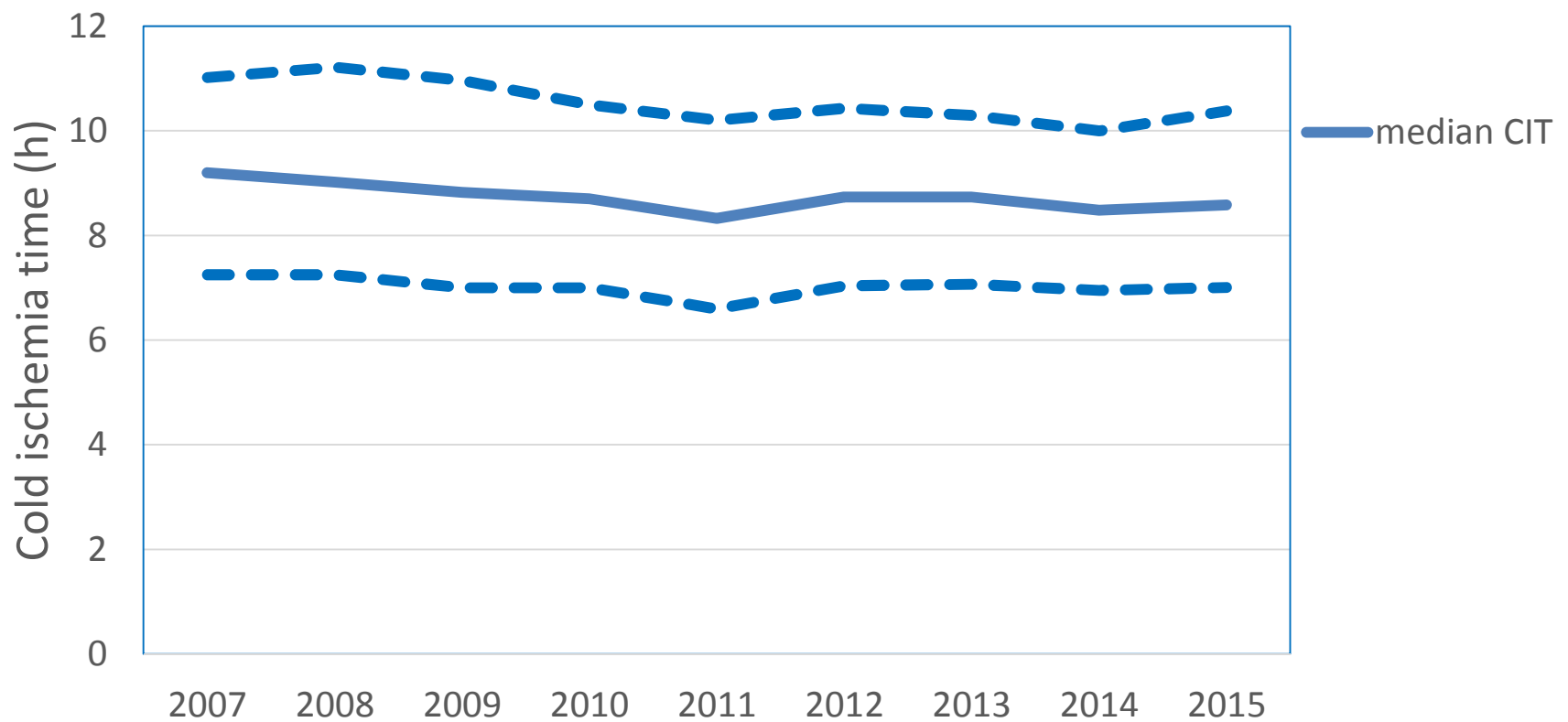
Mixed model

- DBD recipient driven
- DCD centre pick

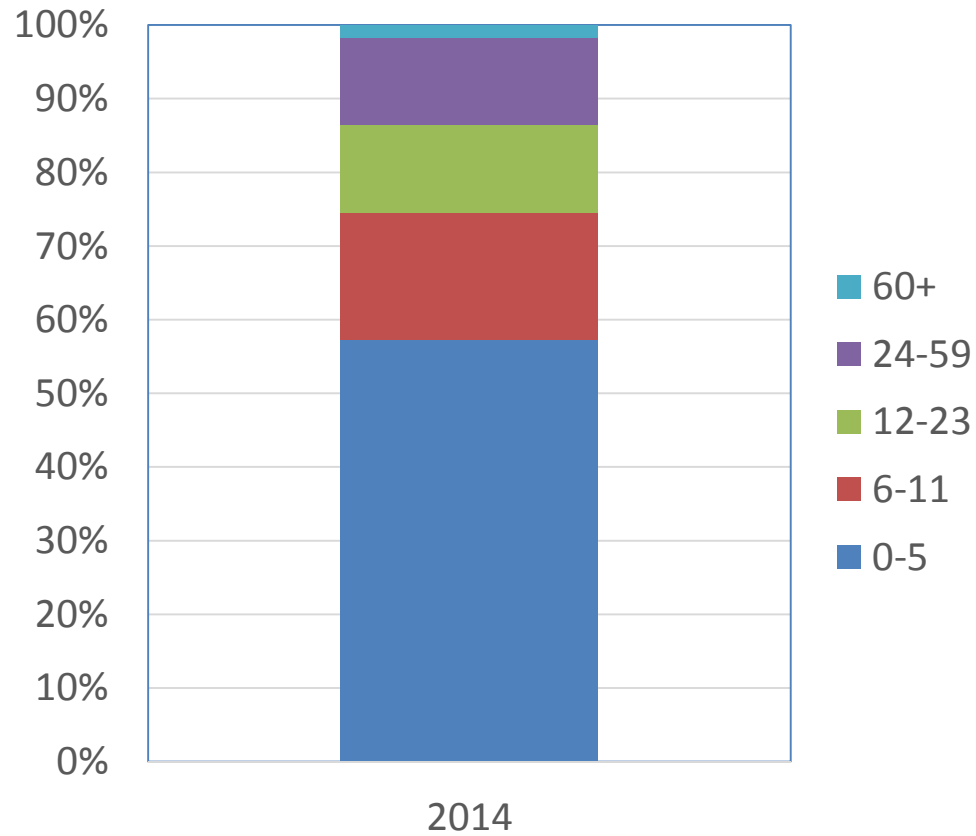
Centre driven offering
with a match list

match MELD transplanted patients

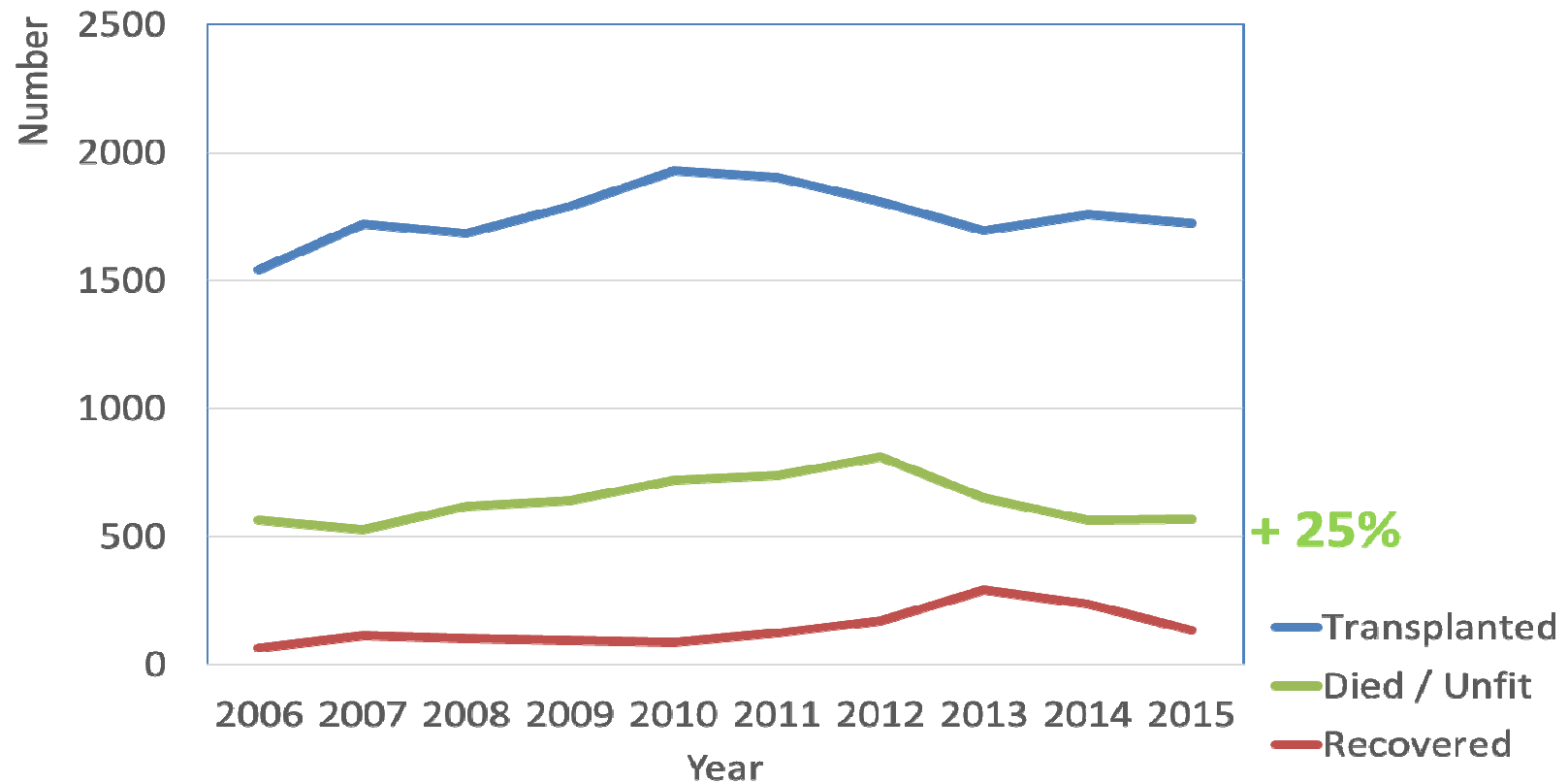




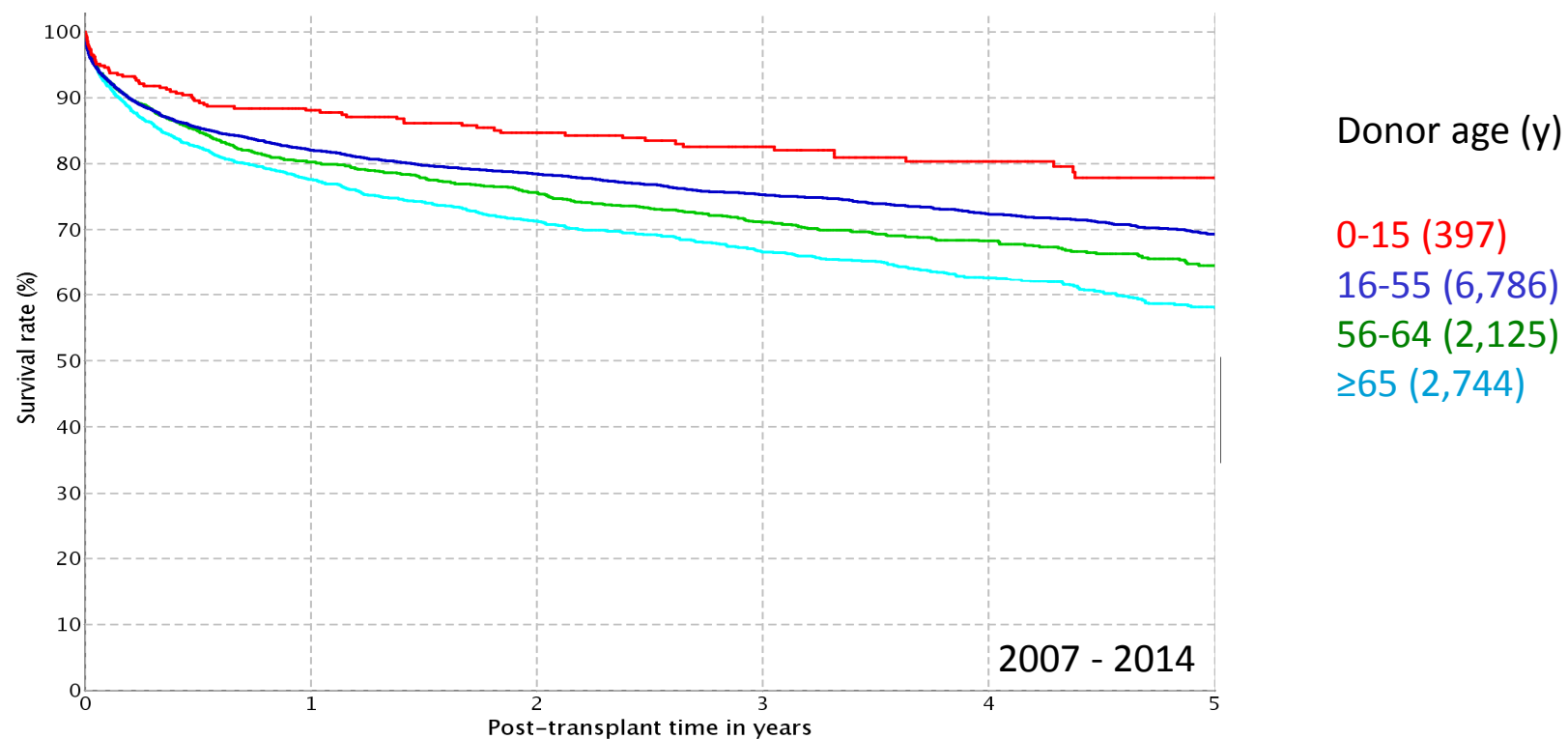
Median waiting time (mo)



Waitlist removals

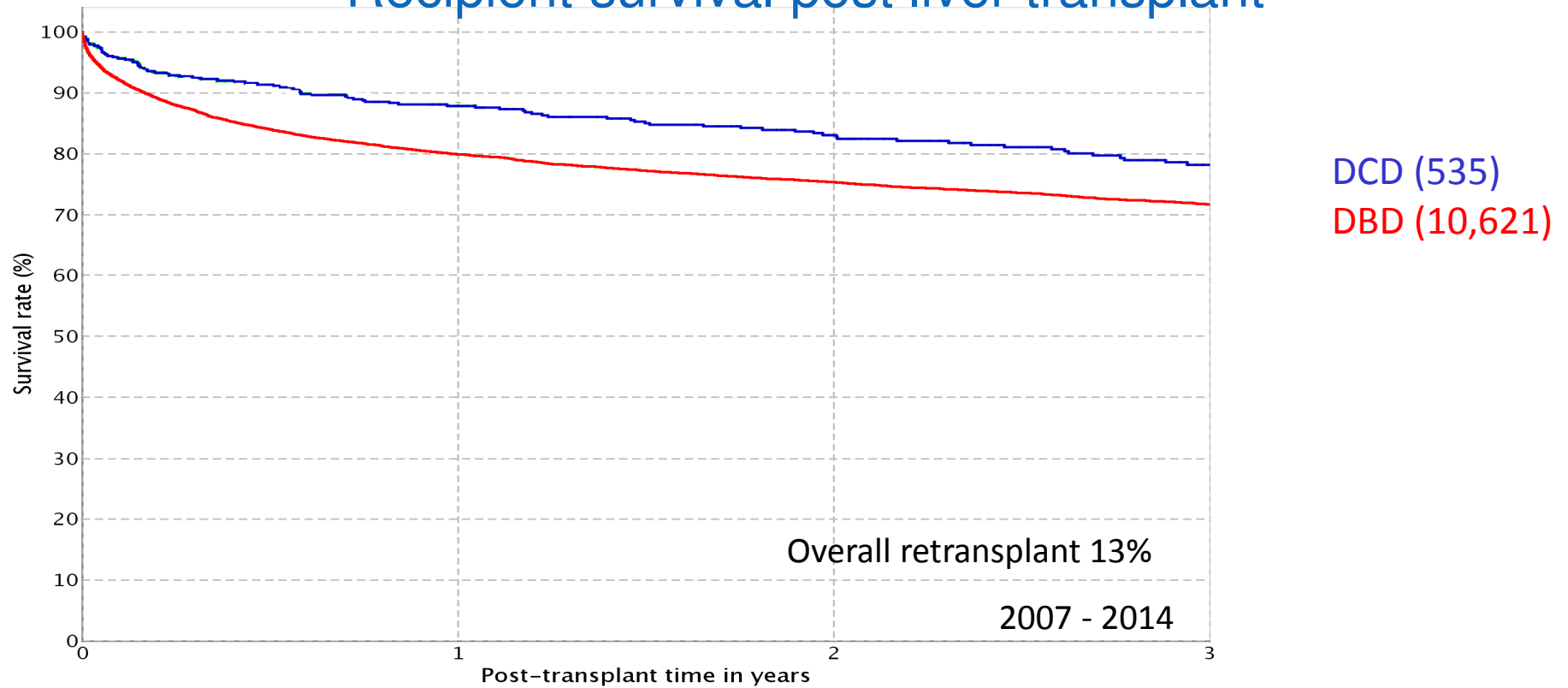


Recipient survival post liver transplant



Eurotransplant
Completeness : 64.74%
Database date : Unknown

Recipient survival post liver transplant



Eurotransplant
Completeness : 75.37%

Liver offering in Eurotransplant is ...

- Unique
- Effective
- Complex → scope for unification
- Need for international monitoring outcome

References

Eurotransplant data are available at
www.statistics.eurotransplant.org

Eurotransplant annual reports available at
www.eurotransplant.org